

Hello Trees Resource Sheet



What to look for outdoors in Autumn Tree identification: holly



'Pupils should be taught to **identify and name** a variety of common wild and garden plants, including **deciduous and evergreen trees**.'

The National Curriculum Statutory Requirements Year 1 Science programme of study, Plants



Test yourself! Can you identify a holly tree?

Of course you can! Holly leaf shapes are used for decoration everywhere in December. So holly is a good tree to confirm that you are a tree-identification expert.



You remember that there are 6 clues to tree identification.

3 of the clues are: **bark**, **branching** and **buds** (bbb).



The other 3 clues: **leaf**, **flower** and **fruit** (fff).



Branching gives us the shape of the tree as a whole.

What shape are holly trees? Are they taller than they are wide: oval or round?



Is the **bark** smooth or grooved? Grey or brown? Light or dark?

Are there **buds** at this time of year? Are they pointed or bobbly? What colour?



Are there **leaves** on holly trees at this time of year? What colour are they?

Do all the leaves have points? The same number of points on one side as the other?

Are the leaves the same colour underneath?



Are there **flowers** at this time of year? Or is it time for **fruit**?

Is holly fruit a berry or a winged seed? What colour is it?

Do all holly trees have fruit?



There is almost always a holly tree in a churchyard. See if you can find one.

How many of the questions can you answer?

Here are some photographs of holly trees:



Two holly trees



A holly hedge

I would say holly trees are oval shaped, taller than they are wide – except in a hedge!

A holly hedge is dense: very difficult for livestock, or us, to get through.

Hello Trees Resource Sheet

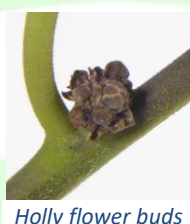
What to look for outdoors in Autumn

Tree identification: holly



Holly bark

Which of the following words describe the bark of your holly tree? Smooth with rough pimples? Light grey? Can you see eye-shaped markings on the bark? Each dark sunken circle within the eye-shape is where a branch has been sawn off. Do you think it looks like the pupil of the eye, and the bulging circle round it like the iris?



Holly flower buds

Does your tree have any buds? If it has, you will find them in the leaf axils.

A leaf stalk is a 'petiole'.
'Leaf axils' are where petioles meet the twig.



Here are photographs of holly leaves, one showing the outline of a 5-year-old's hand.



Would you agree that

- each leaf is smaller than the hand,
- most holly leaves are dark green on top and light green underneath,
- new leaves are lighter green and have smoother edges
- some holly leaves are green and white (and some are green and yellow),
- some points of the leaves turn up and some down,
- the points are very sharp,
- Not all holly leaves have pointed edges.

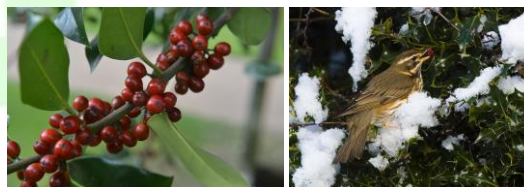
Anything else?

Deer and sheep eat holly leaves. Imagine those sharp prickles in their mouth!



Fruit is our other Big Clue to a tree's identity in Autumn.

No need to tell you that holly berries are round and red. No need to tell this redwing either.



For much more about holly trees, see Hello Trees book 'Hetty and Homer Holly' to be found at the [Hello Trees](http://www.hellotrees.co.uk) website – where there are lots of fun things to look for and do outdoors. Do share what you have been up to on our [Facebook](https://www.facebook.com/hellotrees) page.