

Hello Trees Resource Sheet

What to do indoors instead of outdoors

Leaf rubbing



Taking a proper look at leaves is a good start to knowing which tree is which.



As you do a leaf rubbing, you get to notice the shape and sizes of the leaf, and whether the leaf has smooth edges or zigzag edges.

Doing leaf rubbings also gives you a record of your collection.



You will need wax crayons and paper – and a collection of leaves.

See Hello Trees [Collecting tree leaves](#).



Take the paper off the crayon you want to use.



Feel how smooth the one side of your leaf is and how much the veins stick up on the other side.

Turn your leaf over so that the rough side is on top.



My two leaves are from the same lime tree. I was surprised at how different they are from each other.



I picked a leaf from another lime tree. It was even more different from the first!



I also picked a small leaf from the second lime tree.

I think it is a new leaf: it was still growing.



I did a leaf rubbing of all three leaves together.

I put a piece of paper over the up-turned leaves, held the paper firmly and started rubbing over the leaves with the long side of the crayon.

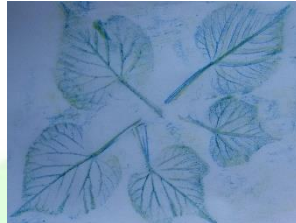
Hello Trees Resource Sheet

What to do indoors instead of outdoors

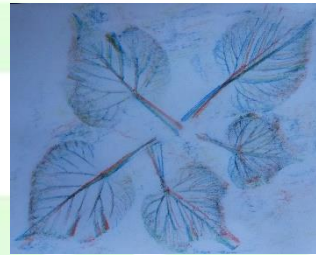
Leaf rubbing



Then I did a leaf rubbing of some more leaves I had picked from the second tree.



Then I went over the blue rubbing with a yellow crayon.



Then with red.

The paper slipped a bit as I rubbed and I liked the artistic effect.

I also found I was delighting in all sorts of things I noticed about the leaves.



I liked this curved point.



I spotted this aphid.



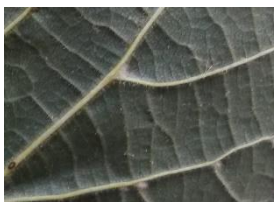
I could see next year's shoot buds forming.



I could see the scale on one bud.



I saw that there are hairs all over the underside of leaves of one tree but not on the leaves of the other tree. Would you say the hairs are brown? Beige? Orange? See how there are tufts of hairs at the vein axils (where the veins join each other).



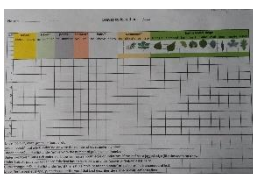
I could see that there are small veins between the main veins.



I thought the serrations on the leaves from one tree were less even than those on the leaves of the other tree. When I looked at serrations on other parts of the leaf, I was not so sure.



Leaf rubbing is a way of making a record of the leaves you collect. You could collect them together into a binder.



You might also like to create your own [tree leaf database](#).