

Hello Trees Resource Sheet

What to look for outdoors in spring

Tree catkins

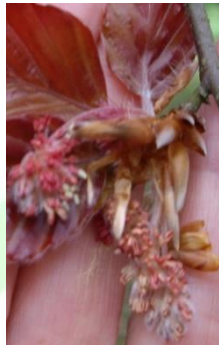


A **catkin** is series of unisex flowers arranged in circles round a slender stem.
 Catkin means 'little cat': do you think catkins resemble kittens' tails?

Male catkins make pollen. Here are male catkins of some common British trees.



Tree 1



Tree 2



Tree 3



Tree 4



Tree 5



Tree 6

See if you can match the male catkins to the female flowers that are to catch the pollen.



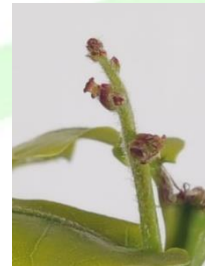
Tree A



Tree B



Tree C



Tree D



Tree E



Tree F

Hello Trees Resource Sheet



What to look for outdoors in spring

Tree catkins



Birch (2B)



Alder (3A)



Hazel (4C)



Oak (5D)



Beech (1F)



Pussy Willow (6E)

Male and female catkins on separate trees.



Which male belonged to which female was hard to guess, I think.

Did you get any right?

Can you point to the male and female flowers on each of the photographs?



All the flowers here are wind pollinated: pollen reaches the female flowers by being carried on the wind (rather than by insects or birds).



I think it is amazing that the pollen ever reaches the female flowers that are sometimes tiny and sometimes on a separate tree.



See how many of the male and female flowers you can find outdoors.



There is more to be found out about [Trees: male and female flower parts](#), [Birch tree catkins](#), and [Wind pollination](#).